

JUMEIRAH PARK

COMMUNITY GUIDE

Jumeirah Park is a premier residential community in Dubai, known for its spacious villas, lush green parks, and family-friendly atmosphere. Developed by Nakheel, this community is designed to provide a serene and luxurious lifestyle with a focus on comfort, privacy, and modern living. Jumeirah Park offers a blend of luxury, comfort, and community living, making it a sought-after destination for families and individuals looking for a high-quality lifestyle in Dubai.



Property Types

Legacy Villas: Inspired by traditional Arabic architecture, featuring tiled roofs and spacious gardens.

Regional Villas: Designed with a blend of traditional and contemporary styles, offering large living spaces and modern amenities.

Heritage Villas: Combining classic and modern designs, these villas offer a comfortable and elegant living environment.



Transportation

Car: Most residents prefer using cars for commuting, given the ample parking space and easy access to major roads.

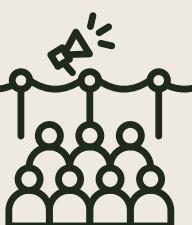
Public Transport: Although primarily a car-dependent community, public transport options like buses and nearby metro stations are accessible.



Location

Proximity: Located in the heart of Dubai, Jumeirah Park is conveniently situated near major highways such as Sheikh Zayed Road (E11) and Sheikh Mohammed Bin Zayed Road (E311), providing easy access to key areas of the city.

Nearby Areas: Close to popular neighborhoods like Jumeirah Islands, Jumeirah Lake Towers (JLT), and Dubai Marina.



Community Events

Festivals and Markets: Regular community events, including seasonal festivals, farmers' markets, and outdoor activities.

Sports and Fitness: Community-organized sports leagues, yoga classes, and fitness boot camps.



Pros & Cons

Spacious Living: Large villas with private gardens provide ample space for families.

Greenery: Abundant green spaces and parks create a tranquil environment.

Modern Amenities: Access to high-quality amenities and facilities.

Strategic Location: Proximity to major highways and key areas in Dubai.

Car Dependency: Limited public transportation options may require residents to rely on personal vehicles.

Higher Costs: Premium living comes with higher property prices and maintenance costs.

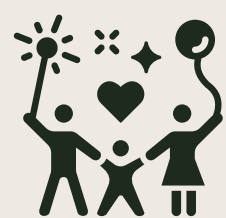


Tips

Visit the Community: Spend some time exploring the parks, facilities, and neighborhood vibe.

Check Schools: If you have children, research the nearby schools and their curriculums.

Understand Costs: Be aware of the maintenance fees and other costs associated with living in a villa community.



Lifestyle

Family-Friendly: With its secure environment, wide streets, and plenty of play areas, Jumeirah Park is ideal for families with children.

Pet-Friendly: Spacious yards and nearby parks make it a great place for pet owners.

Leisure and Entertainment: Close to various entertainment hubs like Dubai Marina, JBR, and The Walk, offering plenty of options for dining, shopping, and leisure activities.